



## This Month @ QuantivRisk

We appreciate you taking a minute to catch-up on our growth and progress. Here is the latest...

[quantivrisk.com](https://quantivrisk.com)



### Conferences & Events

CEO John Pettit presented at **InsurTech Insights NYC** in early June. John spoke about the value of leveraging connected car data in auto claims adjudication, and shared the first ever live demo of our proprietary **CRASHVIEW** application. Hear this thoughts on the experience [here](#).

Founder, Mike Nelson, and CEO John Pettit will present about the opportunity to incorporate analysis of connected car data in auto claims adjudication at the **Nevada Department of Insurance Property & Casualty Advisory Board** on July 16th in Carson City.

### Newsroom

Last week we shared the big news that longtime Progressive Chief Legal Officer, **Dan Mascaro**, joined the QuantivRisk Advisory Board. Dan brings an unrivaled knowledge, experience and perspective that will be invaluable as we expand our offerings, and refine our value propositions for customers. See the announcement [here](#).

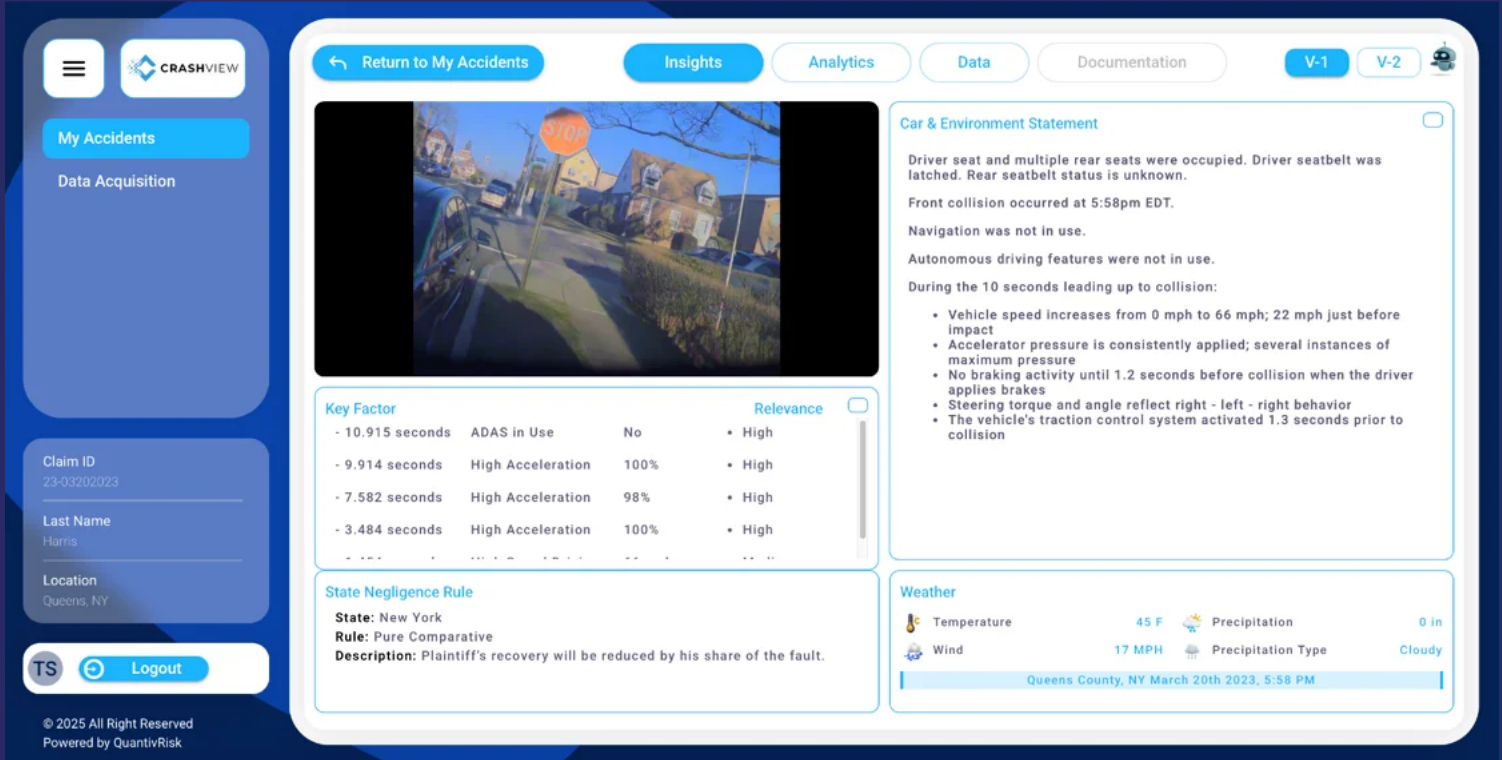
**Rivian** has been in the [news](#) due to a recall related to faulty turn signals. If you have Rivian's in your book that have been in an accident, we would love to help you get to the truth about what happened.

### Product Updates

Last month we announced that **CRASHVIEW** is live. Early feedback has been very positive, and now that the foundation is poured we will be adding new features at a rapid pace, including:

- **CrashBot** - our LLM-based data interrogation feature that allows a user to ask questions of the vehicle data directly.
- **Events & Behaviors** - a proprietary model that evaluates accident data to identify driving activities that were likely relevant to the cause of the accident (ex. pedal confusion).

We would love to demo **CRASHVIEW** for you. [Contact us](#) today.



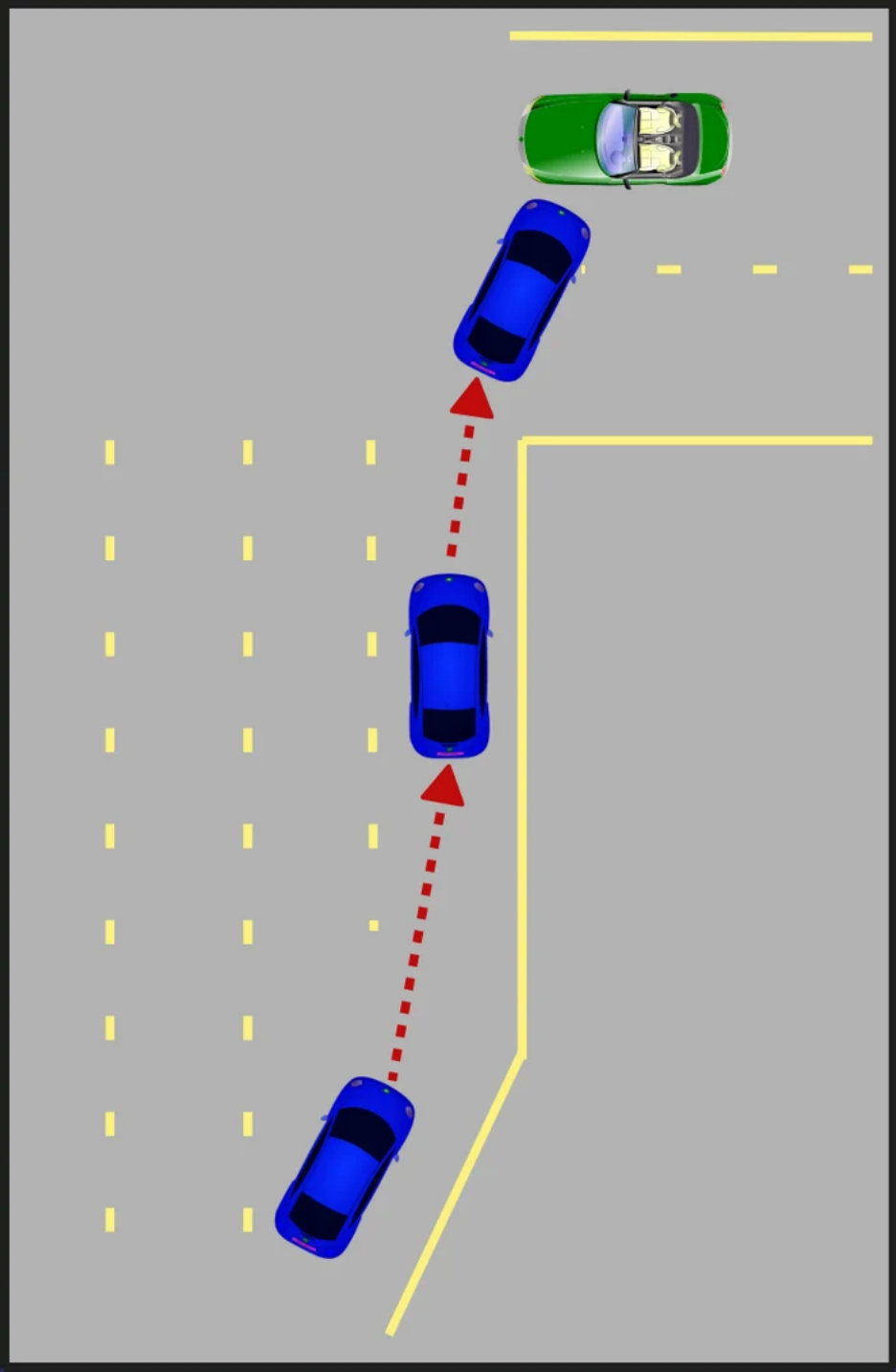
### Accident of the Month

This month we have a simple thought question for you...How would you decide?

This is all you know...

- A vehicle is using an automated driver assistance system (ADAS).
- The vehicle navigates into a right turn lane but fails to slow down enough to make the turn.
- The vehicle collides with another vehicle waiting to turn left at the intersection.
- It is raining.

What other information would help you make a liability decision?



Quantiv Risk, Inc., 745 Fifth Avenue, Suite 500, New York, NY 10151

[Unsubscribe](#) [Manage preferences](#)